

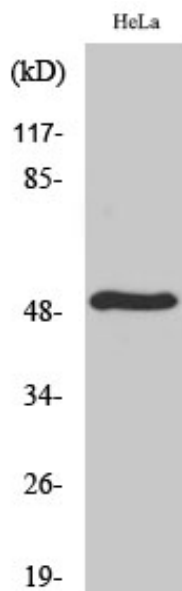


TDE2L Polyclonal Antibody

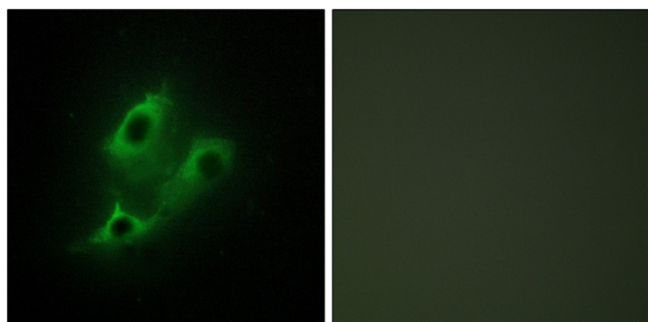
Catalog No	YP-Ab-00532
Isotype	IgG
Reactivity	Human;Mouse;Rat
Applications	WB;IHC;IF;ELISA
Gene Name	SERINC2
Protein Name	Serine incorporator 2
Immunogen	The antiserum was produced against synthesized peptide derived from human SERC2. AA range:341-390
Specificity	TDE2L Polyclonal Antibody detects endogenous levels of TDE2L protein.
Formulation	Liquid in PBS containing 50% glycerol, 0.5% BSA and 0.02% sodium azide.
Source	Polyclonal, Rabbit,IgG
Purification	The antibody was affinity-purified from rabbit antiserum by affinity-chromatography using epitope-specific immunogen.
Dilution	Western Blot: 1/500 - 1/2000. Immunohistochemistry: 1/100 - 1/300. Immunofluorescence: 1/200 - 1/1000. ELISA: 1/40000. Not yet tested in other applications.
Concentration	1 mg/ml
Purity	≥90%
Storage Stability	-20°C/1 year
Synonyms	SERINC2; TDE2L; FKSG84; Serine incorporator 2; Tumor differentially expressed protein 2-like
Observed Band	55kD
Cell Pathway	Membrane ; Multi-pass membrane protein .
Tissue Specificity	Colon,Liver,Pancreas,Uterus,
Function	similarity:Belongs to the TDE1 family.,
Background	similarity:Belongs to the TDE1 family.,
matters needing attention	Avoid repeated freezing and thawing!
Usage suggestions	This product can be used in immunological reaction related experiments. For more information, please consult technical personnel.



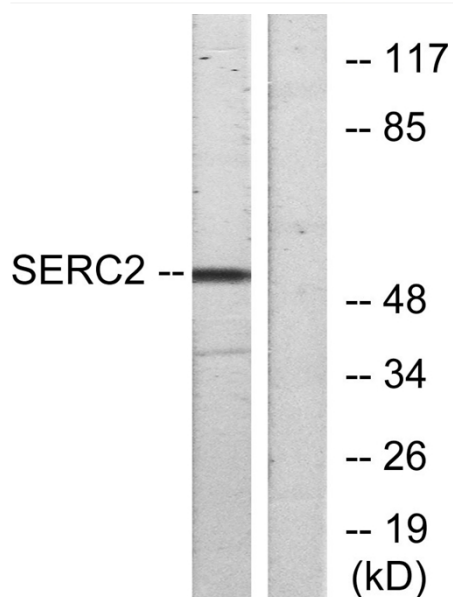
Products Images



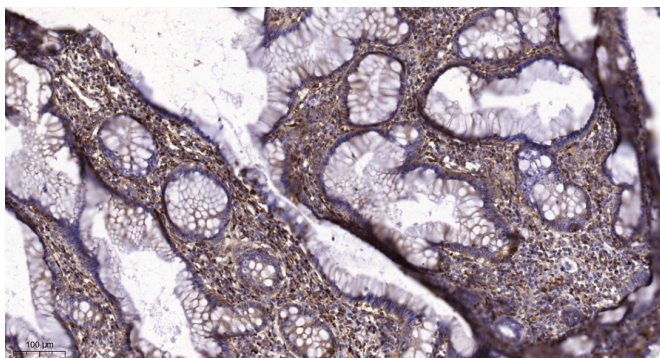
Western Blot analysis of various cells using TDE2L Polyclonal Antibody



Immunofluorescence analysis of NIH/3T3 cells, using SERC2 Antibody. The picture on the right is blocked with the synthesized peptide.



Western blot analysis of lysates from HeLa cells, using SERC2 Antibody. The lane on the right is blocked with the synthesized peptide.



Immunohistochemical analysis of paraffin-embedded human colon cancer. 1, Tris-EDTA, pH 9.0 was used for antigen retrieval. 2 Antibody was diluted at 1:200 (4° overnight). 3, Secondary antibody was diluted at 1:200 (room temperature, 45 min).